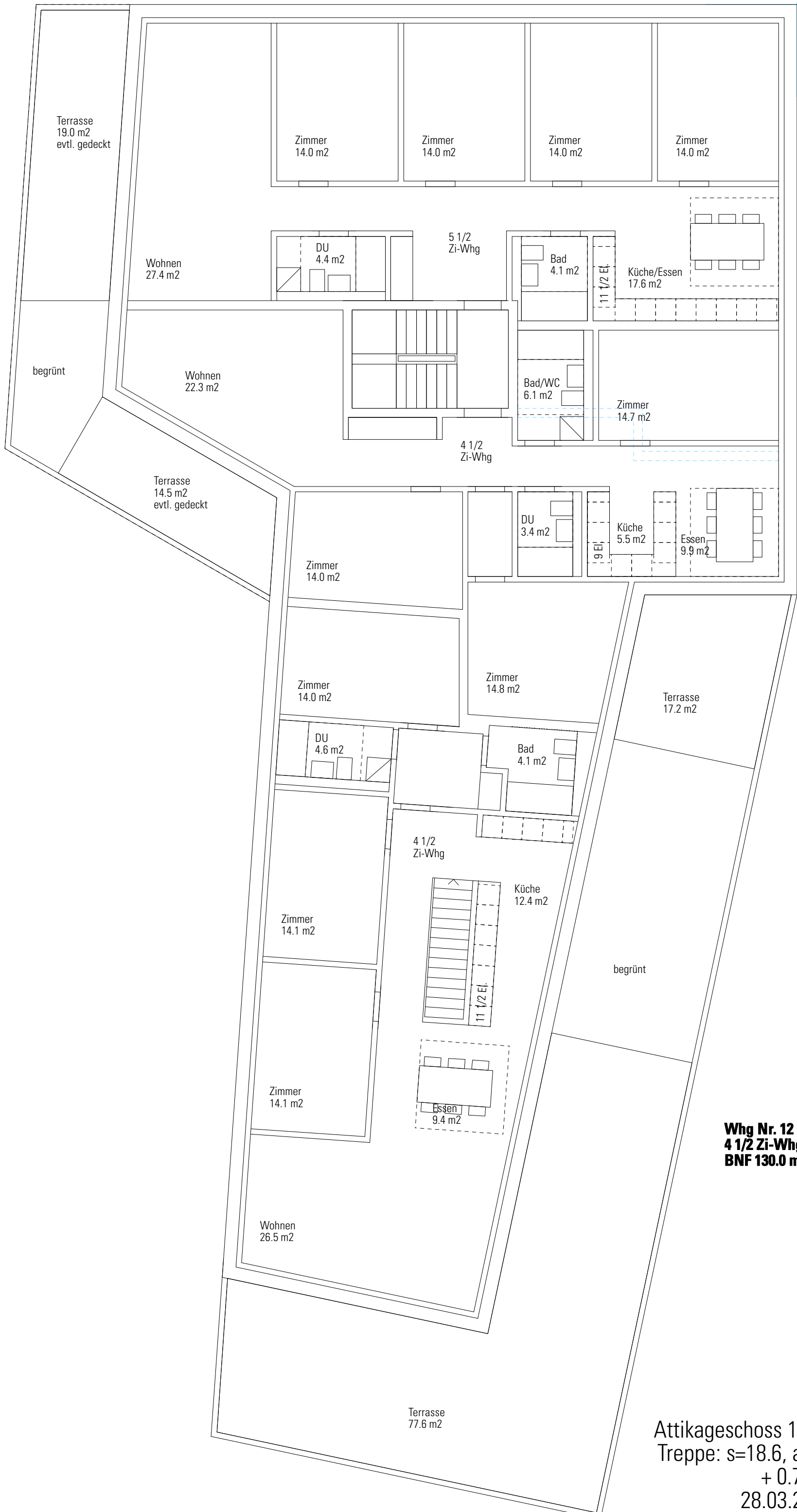


Whg Nr. 10
5 1/2 Zi-Whg
BNF 135.5 m²

Whg Nr. 11
4 1/2 Zi-Whg
BNF 112.9 m²



Whg Nr. 12
4 1/2 Zi-Whg
BNF 130.0 m²

Attikageschoss 1:100
Treppe: s=18.6, a=27
+ 0.75 m
28.03.2008