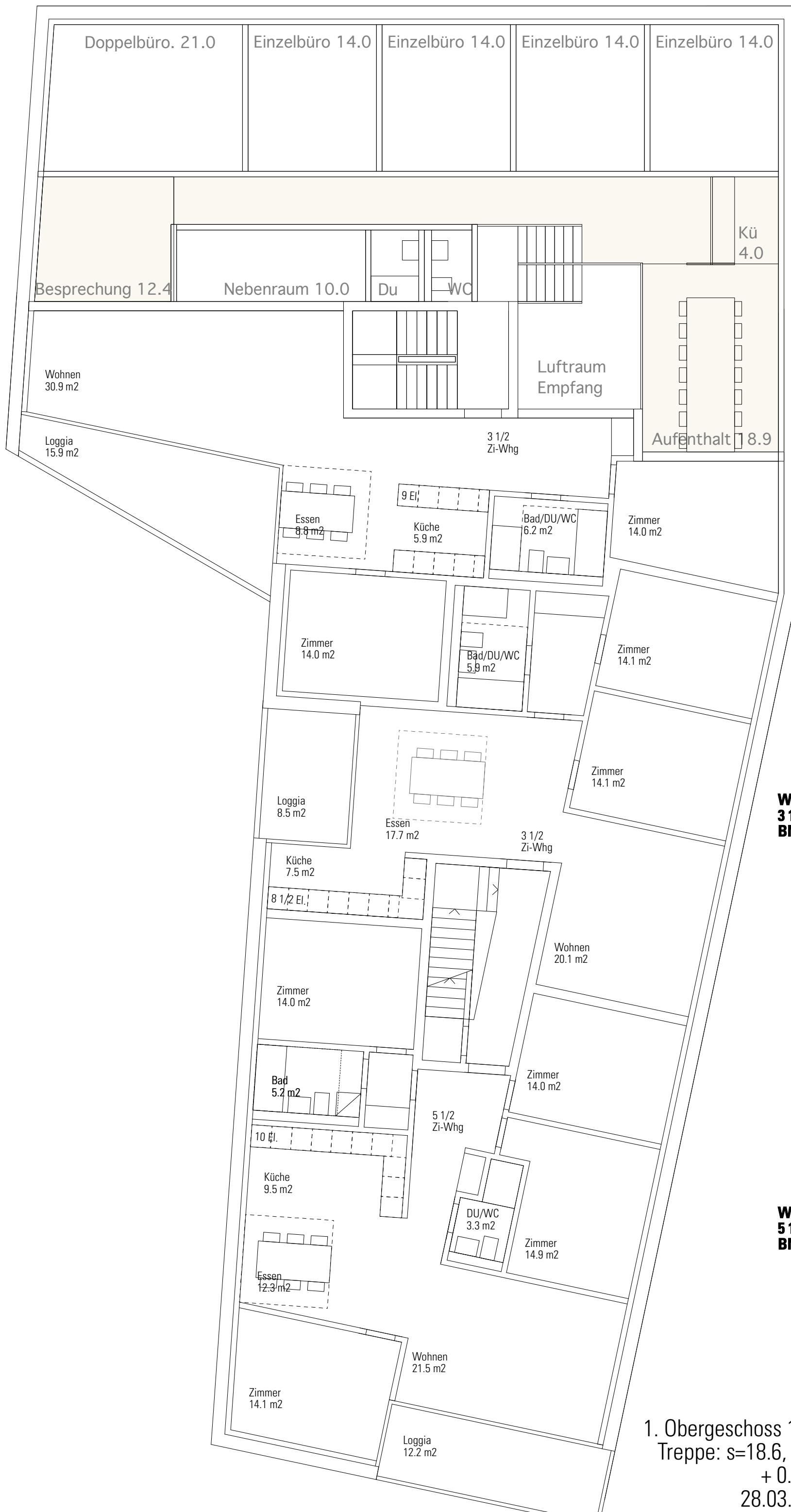


**Büro OG**  
**BNF 170 m<sup>2</sup>**

**Whg Nr. 2**  
**3 1/2 Zi-Whg**  
**BNF 96.7 m<sup>2</sup>**



**Whg Nr. 3**  
**3 1/2 Zi-Whg**  
**BNF 94.9 m<sup>2</sup>**

**Whg Nr. 4**  
**5 1/2 Zi-Whg**  
**BNF 130.1 m<sup>2</sup>**

1. Obergeschoss 1:100  
Treppe: s=18.6, a=27  
+ 0.75 m  
28.03.2008